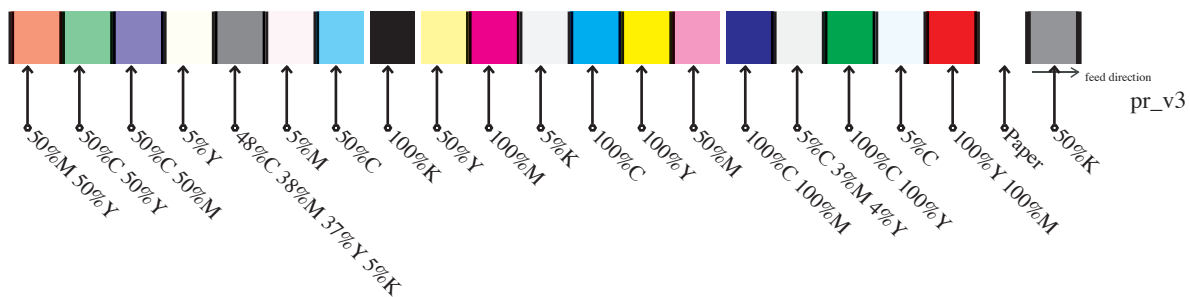


Overview: The proof to reference procedure checks the calibration status of the digital proofing device with color management applied. The proofing system outputs a control strip which will simulate the press printing conditions. After a 15 minute drying period, the control strip is read-in using a measuring device. If the calibration fails, the proofer should be recalibrated.

••••• The control-strip: [pr_v3.pdf](#)



- The Measuring Device: GretagMacbeth eye-one UV cut.
- Digital Proofing Device: Epson 7600, 9600, 10,000 and Agfa Sherpa 24m.
- Quality control software: ColorMetrix Technologies.
- Ceramic Tile: Bemis Graphics Color 001 White.

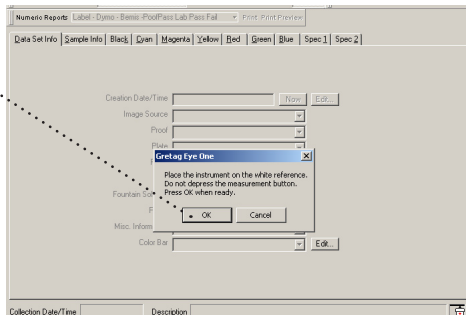


Procedure: Read-in strip

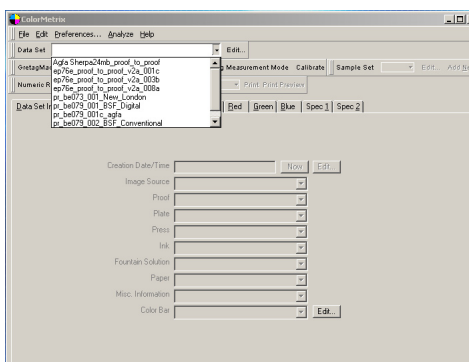
1. Launch ColorMetrix's



2. Place the instrument on the white reference. Do not depress the measurement button. Press ok when ready. Select OK.



3. Select Proof to Reference data set.



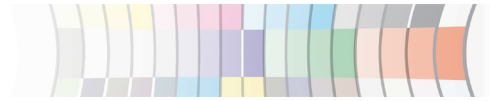
Examples

- pr_be079_001_BSF_Digital*
- pr_be079_002_BSF_Conventional*
- pr_be119_001_Curwood_Appleton*
- pr_be_073_001_New_London*

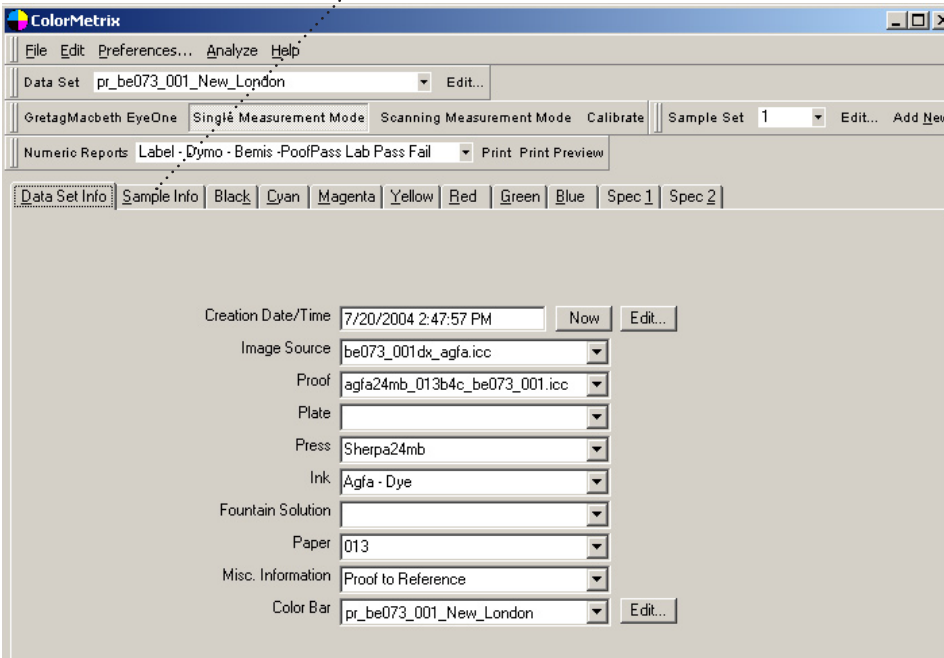
pr_be079_001_BSF_Digital

proof to reference

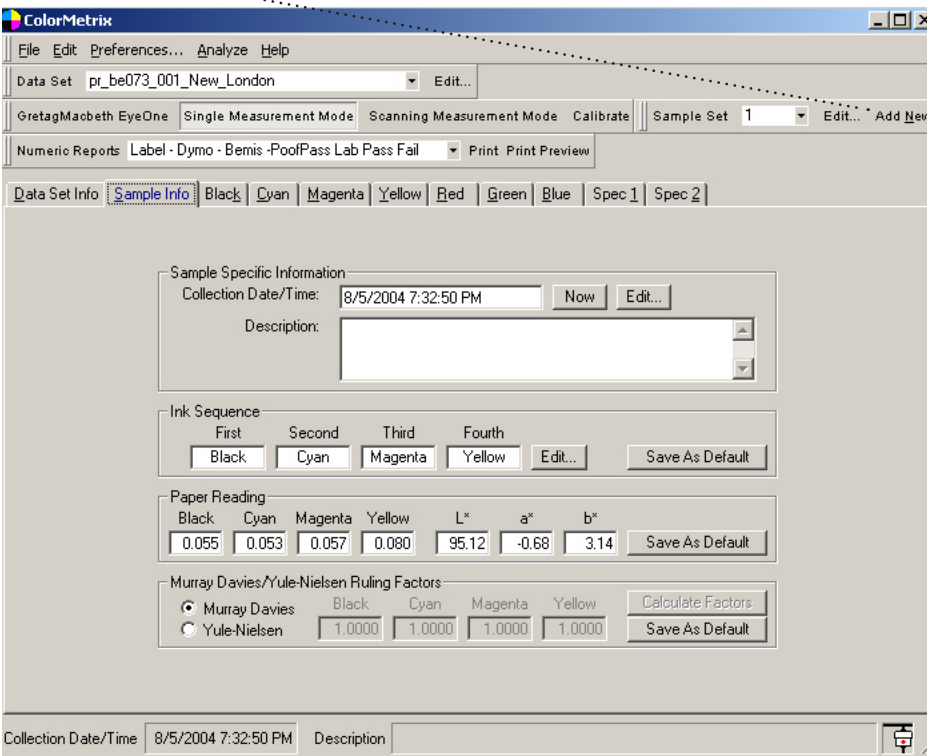
profile name



5. Click: Sample information tab.



6. Click: Add new button.

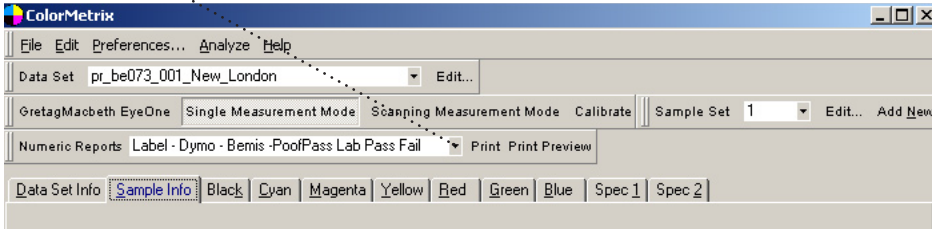


7. Measure Control Strip: Using eye-one and Ceramic Tile.

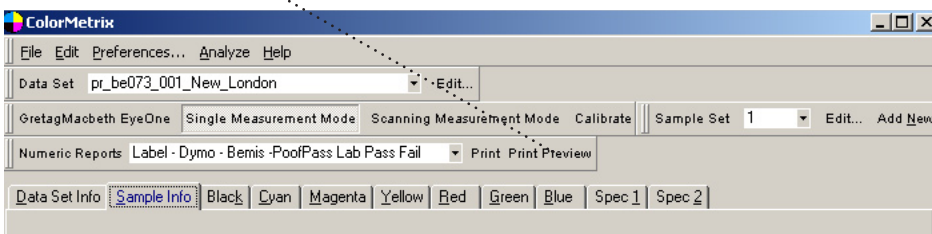


Procedure: View / Print / Fail Report

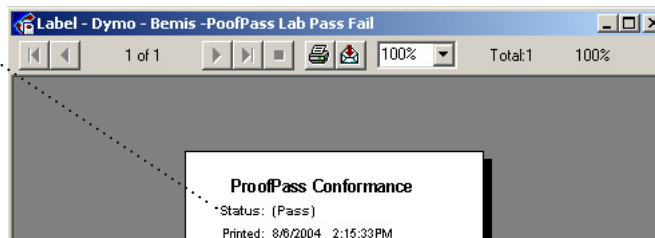
1. Select Numeric Reports: Label - Dymo - Bemis - ProofPass Lab Pass Fail



2. Select Print Preview.



3. View Pass of Fail



4. Print label

